

AN GIANG FRUIT - VEGETABLES & FOODSTUFF
JOINT STOCK COMPANY (ANTESCO)



ANTESCO[®]

CATALOGUE



[T]: +84 296 384 1196 | +84 296 384 1460
[E]: antesco@antesco.com | sales@antesco.com
[A]: 69-71-73 Nguyen Hue street, Long Xuyen city, An Giang province, Vietnam

www.antesco.com

 CERTIFICATES



QUALITY IS CREDIT, EXISTENCE
AND DEVELOPMENT OF OUR COMPANY



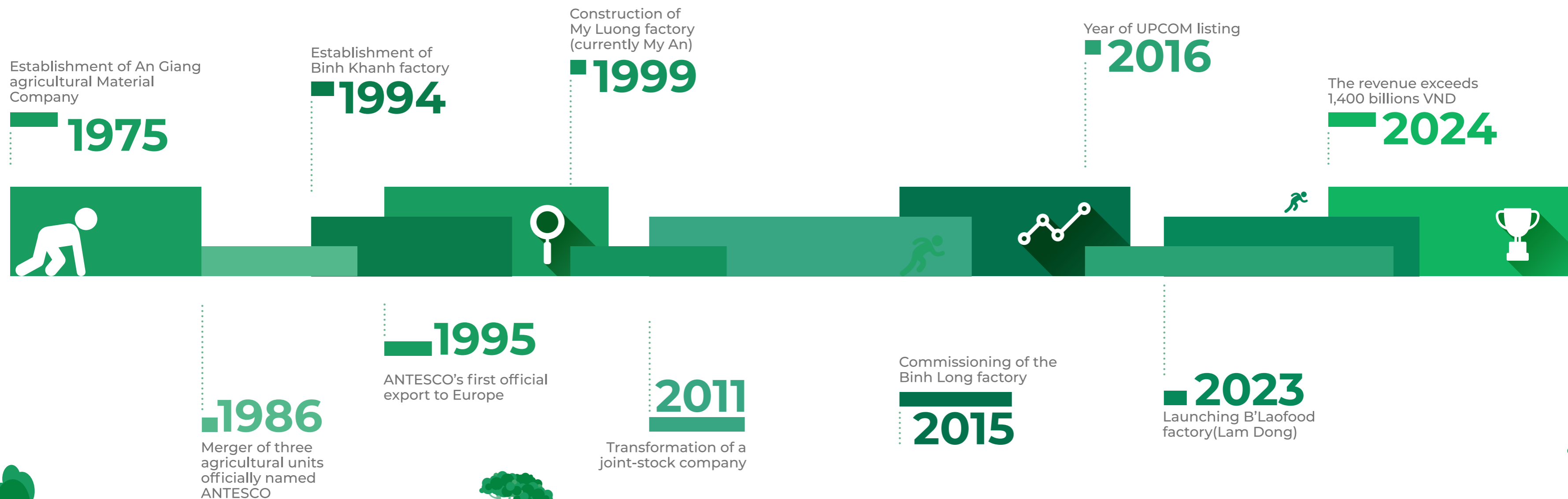
A SEED OF
ASPIRATION
FLOURISHING
■ WITH **THE NATION**



50 Years

of Asserting LEADERSHIP

From a small business in the Mekong Delta, Antesco has grown into one of the leading companies in the fruit-and-vegetable processing and export industry in Vietnam. With 50 years of continuous innovation and close cooperation with farmers, Antesco has established a strong presence in both domestic and international markets.



2025



**The Green
Sprout
of Aspiration**



**Taking Root,
Reaching Out**



**Strengthening
Our
Foundations**



**Sustainable
Development**



**The Mighty
Tree Rising**



CORE VALUE

QUALITY

We continuously enhance quality to satisfy the customer need. Quality is top priority in all of activities and in responsibility of all members in the company with spirit "Quality is credit, existence and development of our company".

FARMER

To be companion of the farmers, creating income and enhancing life standard for the farmers.

HUMAN

We considered the staffs as valuable assets with spirits of solidarity; honesty; responsibility, mutual respect and contribution to our success.

2025: 1,500+ employees

CUSTOMER

We always listen to comments and opinions to improve and innovate continuously for the company development.

COMMITMENT

We always commit stable growth and professional style in any activities and proud of each products supplied to customer.





“ ”
Bringing
**VIETNAMESE
PRODUCE** to
every corner of
THE WORLD

PRODUCTION SCALE

- 4 production plants
- 12 processing lines
- Annual capacity of 75,000 tons
- Fully equipped with international quality certifications such as: FSMA, BRC, Kosher, Halal, SEDEX, etc.
- Equipped with the most advanced technology and machinery in the world.

KEY PRODUCTS

- Mango
- Dragon Fruit
- Pineapple
- Passion Fruit
- Baby Corn
- Edamame

PRODUCT LINES

- Frozen
- Canned
- Juice
- Dried and Fresh

EXPORT MARKET:

40+ Countries: North America, Europe, Australia, Japan, Korea, Taiwan, China.
 Ranked 1 in mango, dragon fruit, edamame, baby corn

- North America: 20%
- China: 20%
- Asia & Australia: 25%
- Europe: 35%



END OF 2025

5th factory processing NFC/Juice Concentrate

IN 2026

6th factory – Processing IQF and Freeze-dried increasing needs of the production for world wide



BINH LONG FACTORY



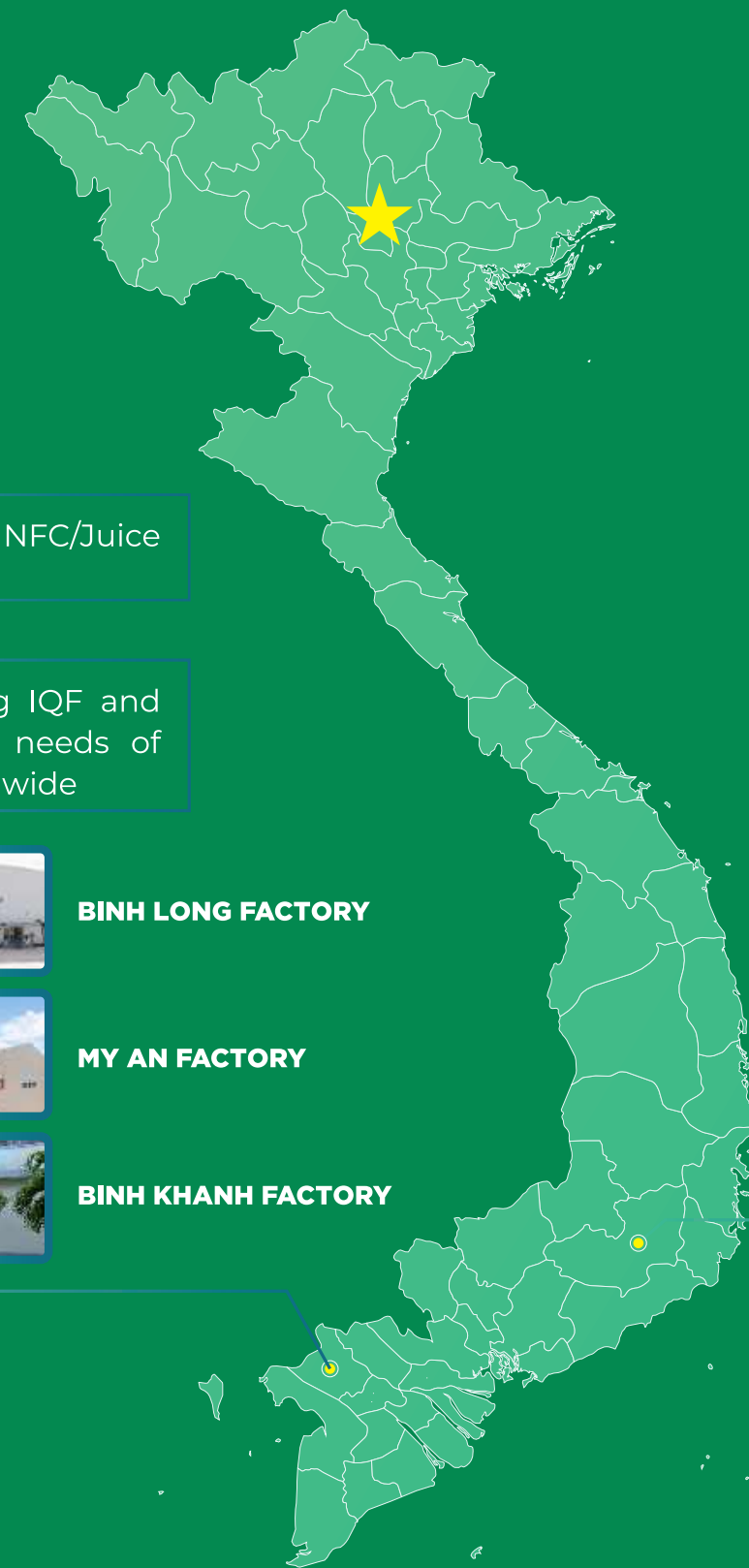
MY AN FACTORY



BINH KHANH FACTORY

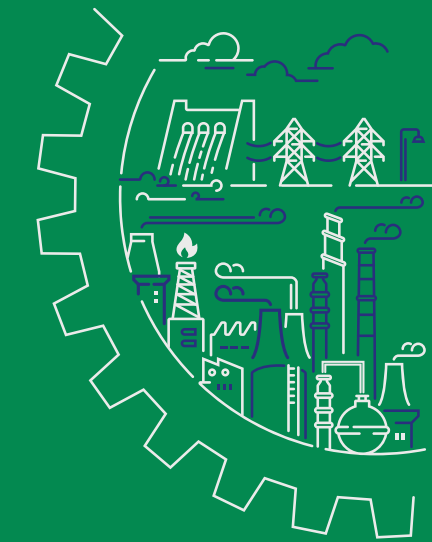


B' LAO FOOD FACTORY



Hoàng Sa Islands

Trường Sa Islands



FRUIT SEASONAL CHART FRUIT SEASON

	JAN	FEB	MAR	APR	MAY	JUN	JUL	AUG	SEP	OCT	NOV	DEC
Mango (Kaew)		Main	Main	Main	Main					Sub	Sub	Sub
Mango (Catchu)	Main	Main	Main	Main	Main	Sub			Sub	Sub	Sub	Sub
Mango (Taiwan)		Main	Main	Main	Main					Sub	Sub	Sub
Dragon Fruit (Red)	Sub	Sub	Sub	Sub	Main	Main	Main	Main	Main	Main	Sub	Sub
Dragon Fruit (Whrite)	Sub	Sub	Sub	Main	Main	Main	Main	Main	Main	Sub	Sub	Sub
Passion Fruit	Sub	Sub	Sub	Main	Main	Main	Main	Main	Sub	Main	Main	Main
Pineapple (Queen)	Sub	Sub	Main	Main	Main	Main	Sub	Sub	Sub	Sub	Sub	Sub
Pineapple (MD2)	Sub	Sub	Main	Main	Main	Main	Sub	Sub	Sub	Sub	Sub	Sub
Lime	Sub	Main	Main	Main	Sub	Sub	Sub	Sub	Sub	Main	Main	Main
Papaya	Main	Main	Main	Sub	Sub	Sub	Sub	Sub	Sub	Main	Main	Main
Banana (Cavendish)	Main	Main	Main	Sub	Sub	Sub	Sub	Sub	Sub	Sub	Main	Main
Avocado	Sub	Sub	Sub	Sub	Main	Main	Main	Main	Main	Sub	Sub	Sub
Watermelon	Main	Main	Main	Sub	Sub	Sub	Sub	Sub	Sub	Sub	Sub	Main
Soursop	Sub	Sub	Sub	Sub	Main	Main	Main	Main	Main	Main	Sub	Sub
Jackfruit	Sub	Sub	Sub	Sub	Main	Main	Sub	Sub	Sub	Sub	Sub	Sub
Guava (Pink & White)	Sub	Main	Main	Sub	Main	Main	Sub	Main	Main	Sub	Main	Main
Calamansi	Main	Main	Main	Sub	Sub	Sub	Sub	Sub	Main	Main	Main	Main
Melon	Main	Main	Sub	Sub	Main	Main	Main	Main	Sub	Sub	Main	Main
Durian	Sub	Sub	Main	Main	Main	Main	Main	Main	Sub	Sub	Sub	Sub
Grapefruit	Main	Main	Main	Sub	Sub	Sub	Sub	Sub	Sub	Main	Main	Main

■ Main season
 ■ Sub-season
 Not Available

VEGETABLES SEASONAL CHART VEGETABLES SEASON

	JAN	FEB	MAR	APR	MAY	JUN	JUL	AUG	SEP	OCT	NOV	DEC
Edamame/Mukimame	Main	Main	Main	Sub	Sub	Sub	Sub	Sub	Sub	Sub	Main	Main
Baby Corn	Main	Main	Main	Main	Main	Sub	Sub	Sub	Sub	Sub	Sub	Main
Citronella	Sub	Sub	Sub	Sub	Main	Main	Main	Main	Main	Main	Sub	Sub
Taro	Sub	Sub	Sub	Main	Main	Main	Sub	Sub	Sub	Sub	Sub	Sub
Ginger	Main	Main	Main	Main	Sub	Sub	Sub	Sub	Sub	Sub	Main	Main
Sweet corn	Sub	Main	Main	Main	Main	Sub	Sub	Sub	Sub	Sub	Sub	Sub
Red beetroot	Main	Main	Sub	Sub	Sub	Sub	Sub	Sub	Sub	Main	Main	Main
Lotus root	Main	Main	Main	Sub	Sub	Sub	Sub	Sub	Sub	Sub	Sub	Main
Sweet potato (purple)	Main	Main	Main	Main	Sub	Sub	Sub	Sub	Sub	Sub	Main	Main
Sweet potato (yellow)	Main	Main	Main	Main	Sub	Sub	Sub	Sub	Sub	Sub	Main	Main
Sweet potato (whrite)	Main	Main	Main	Main	Sub	Sub	Sub	Sub	Sub	Sub	Main	Main
Okra	Main	Main	Main	Main	Sub	Sub	Sub	Sub	Sub	Sub	Main	Main
Bell pepper	Main	Main	Main	Main	Sub	Sub	Sub	Sub	Sub	Sub	Main	Main
Hot Chili	Main	Main	Main	Main	Sub	Sub	Sub	Sub	Sub	Main	Main	Main
Turmeric	Main	Main	Main	Sub	Sub	Sub	Sub	Sub	Sub	Sub	Main	Main
Garlic	Sub	Sub	Sub	Main	Main	Main	Sub	Sub	Sub	Main	Main	Main
Strong bamboo shoots	Sub	Sub	Sub	Sub	Sub	Main	Main	Main	Main	Sub	Sub	Sub
Radichio	Main	Main	Sub	Sub	Sub	Sub	Sub	Sub	Sub	Sub	Sub	Sub
Iceberg	Main	Main	Sub	Sub	Sub	Sub	Sub	Sub	Sub	Main	Main	Main

■ Main season
 ■ Sub-season
 Not Available



IQF MANGO



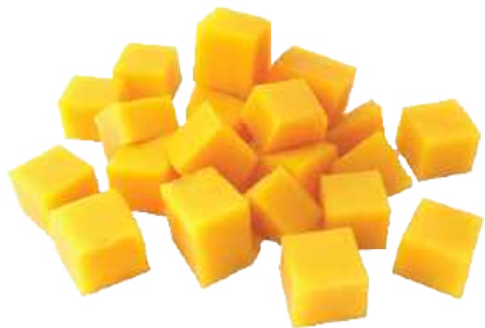
Mango half cut

- Variety: Catchu | Kaew
- Size: Half cut
- Color: natural
- Brix: 13° up | 11° up
- Storage at -18oC or below for 24 months
- Packing: 10kgs/PE bag /carton or customer's requirements



Mango Stick/Skewer

- Variety: Catchu | Kaew
- Size: 60-90gr/stick to up
- Color: natural
- Brix: 13° up | 11° up
- Storage at -18oC or below for 24 months
- Packing: 10kgs/PE bag /carton or customer's requirements



Mango dice

- Variety: Catchu | Kaew | Taiwan | Apple
- Size: (10*10)mm | (15*15)mm | (20*20)mm or customer's requirement
- Color: natural
- Brix: 13°up | 11°up
- Storage: at -18°C or below for 24 months
- Packing: 10kgs/PE bag /carton or customer's requirements



IQF DRAGON FRUIT



- Type: Red | White
- Size: 15*15mm, 20*20mm, 25*25mm
- Brix: 10° up
- Color: Natural Red | White, black seed
- Storage: at -18°C or below for 24 months
- Packing: 10 kgs/PE bag/carton or customer's requirement





IQF PINEAPPLE



Pineapple tidbits

- Size: 1/12 | 1/16 or customer's requirement
- Brix: 10° up
- Color: light yellow to bright yellow color
- Storage: at -18°C or below for 24 months
- Packing: 10kgs/PE bag/carton or customer's requirement.

Pineapple Chunks

- Brix: 10° up
- Color: light yellow to bright yellow color
- Storage: at -18°C or below for 24 months
- Packing: 10kg/PE bag/carton or customer's requirements



Pineapple dices cut

- Size: (10*10)mm
- Brix: 10° up
- Color: light yellow to bright yellow color
- Storage: at -18°C or below for 24 months
- Packing: 10kg/PE bag/carton or customer's requirements




IQF PASSION FRUIT



Passion fruit cube

- Size: 14-17gr;
- Color: Natural
- Brix: 13-up
- Storage at -18°C or below for 24 months
- Packing: 10kgs/PE bag /carton or customer's requirements



Passion fruit block

- Color: Natural
- Brix: 13-up
- Storage at -18°C or below for 24 months
- Packing: 10kgs/PE bag /carton or customer's requirements






IQF BANANA

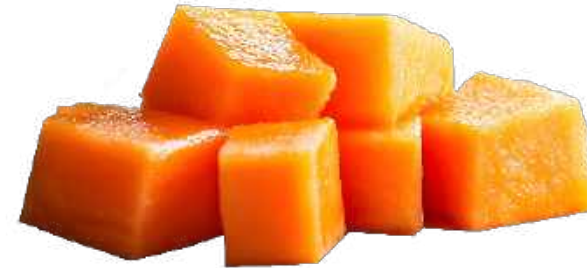

Banana slices

- Size: slices 10mm, 15mm, 20mm or customer's requirement
- Brix: 14° up
- Color: as natural
- Storage: at -18°C or below for 24 months
- Packing: 10kgs/PE bag/carton or customer's requirement



Banana whole

- Size: whole
- Brix: 14° up
- Color: as natural
- Storage: at -18°C or below for 24 months
- Packing: 10kgs/PE bag/carton or customer's requirement


IQF PAPAYA CHUNKS


- Size: (15*15)mm | (20*20)mm or customer's requirement
- Brix: 7° up
- Color: as natural
- Storage: at -18°C or below for 24 months
- Packing: 10kgs/PE bag/carton or customer's requirement


IQF LIME SLICES


- Size: Thickness (5-6)mm
- Color: as natural
- Storage: at -18°C or below for 24 months
- Packing: 10kgs/PE bag/carton or customer's requirement

AVOCADO CHUNK



- Variety: 034 | Booth | Hass
- Size: 20mm/30mm
- Brix: 5-up
- Storage at -18°C or below for 24 months
- Packing: 10kgs/PE bag /carton or customer's requirements



IQF DURIAN



Durian Flesh/Puree

- Brix: 22 -up
- Color: natural
- Storage: at -18°C or below for up to 24 months
- Packing: 10kgs/carton or customer's requirements



Durian Fresh IQF Whole Durian

- Size: 1.7kg - 6kg
- Brix: 22 up yellow
- Storage: at -18°C or below for up to 24 months
- Packing: make to order



IQF BABY CORN



IQF baby corn whole

- Size: 4-10cm | 6-10cm or as customer's request
- Color: natural yellow
- Texture: a young non-fibrous texture
- Ingredient: 100% baby corn
- Storage: at -18°C or below for up to 24 months
- Packing: 10 kgs/PE bag/carton or Buyer's requirement
- GMO: The product is Non-GMO



IQF baby corn cut

- Size: 1.5-3cm / 2-4cm / 5-7mm or as customer's requirement
- Color: natural yellow
- Texture: a young non-fibrous texture
- Ingredient: 100% baby corn
- Storage: at -18°C or below for up to 24 months
- Packing: 10 kgs/PE bag/carton or Buyer's requirement
- GMO: The product is Non-GMO



IQF GREEN SOYBEAN



IQF Edamame

- Variety: Kaohsiung 75
- Ingredient: 100% baby corn
- Storage: at -18°C or below for up to 24 months
- Packing: 10 kgs/PE bag/carton or Buyer's requirement
- GMO: The product is Non-GMO



IQF Mukimame:

- Variety: Kaohsiung 75
- Ingredient: 100% baby corn
- Storage: at -18°C or below for up to 24 months
- Packing: 10 kgs/PE bag/carton or Buyer's requirement
- GMO: The product is Non-GMO



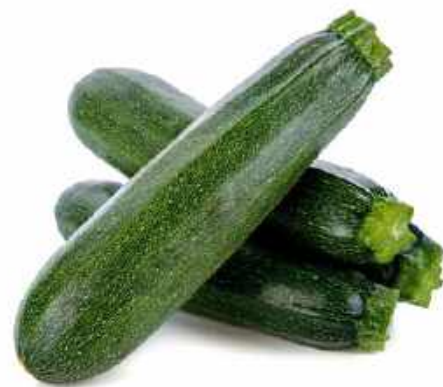
IQF Okra cut

- Size: whole | slices
- Color: as natural
- Storage: at -18°C or below for 24 months
- Packing: 10kgs/PE bag/carton or customer's requirement



IQF Bell Pepper/Paprika

- Shape: chunk 10x10, 15x15, 20x20mm
- Storage: at -18°C
- Packing: 500g, 1kg, 5kg, 10kg



IQF Zucchini

- Size: Slice 7mm/half cut
- Storage: at -18°C
- Packing: 500g, 1kg, 5kg, 10kg

IQF sweet corn

- Variety: Super Sweet Corn 510
- Size: Kernels | Cut | Whole
- Color: Natural yellow
- Storage: at -18°C or below for 24 months
- Packing: 10kgs/PE bag/carton or customer's requirements



QF Lemongrass

- Size: cut (2-3cm) | slices (2-3mm) or (3-4mm) | Grinded
- Color: as natural. Whitish nuggets, some pinkish/purple flushing on outer skin
- Storage: at -18°C or below for 24 months
- Packing: 10kgs/carton or customer's requirement



IQF Spinach

- Size: cut 5-10cm
- Storage: at -18°C
- Packing: 500g, 1kg, 5kg, 10kg



IQF Sweet Potato

- Variety: Japan/local
- Shape: slice 7mm, 10mm, 15mm
- Dice/Chunk: 10x10, 15x15, 20x20mm
- Storage: at -18°C
- Packing: 500g, 1kg, 5kg, 10kg



IQF Pumpkin Cube

IQF Pumpkin

- Variety: Pumpkin/Butternut Squash
- Shape: chunk 10x10, 15x15, 20x20mm
- Storage: at -18°C
- Packing: 500g, 1kg, 5kg, 10kg



IQF Lotus root

- Size: Thickness 10mm
- Color: as natural
- Storage: at -18°C or below for 24 months
- Packing: 10kgs/PE bag/carton or customer's requirement



IQF Cauliflower

- Size: Make to order
- Storage: at -18°C
- Packing: 500g, 1kg, 5kg, 10kg



IQF Broccoli

- Variety: Japanese/Local
- Shape: whole/half cut
- Storage: at -18°C
- Packing: 500g, 1kg, 5kg, 10kg



IQF Young Green Jackfruit

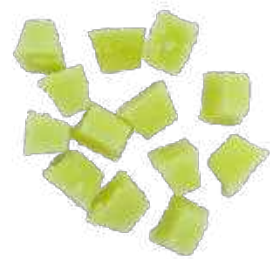
- Size: make to order
- Storage: at -18°C
- Packing: 500g, 1kg, 5kg, 10kg

IQF CUBE PRODUCTS



PINK GUAVA CUBE

7-10gr or 14-17gr
Packing: 10kgs/PE bag/carton
or customer's requirement



WHITE GUAVA CUBE

Size: 7-10gr or 14-17gr
Packing: 10kgs/PE bag/carton
or customer's requirement



PINEAPPLE CUBE

Size: 7-10gr or 14-17gr
Packing: 10kgs/PE bag/carton
or customer's requirement



**PASSION FRUIT
CUBE SEEDLESS**

Size: 7-10gr or 14-17gr
Packing: 10kgs/PE bag/carton
or customer's requirement



WATERMELON CUBE

Size: 7-10gr or 14-17gr
Packing: 10kgs/PE bag/carton
or customer's requirement



**PASSION FRUIT CUBE
WITH SEEDS**

Size: 7-10gr or 14-17gr
Packing: 10kgs/PE bag/carton
or customer's requirement

IQF SPECIAL PRODUCTS



MANGO WHOLE DIP IN
CHOCOLATE



MANGO HALF DIP
CHOCOLATE



BANANA DIP IN
CHOCOLATE



BANANA HALF DIP IN
CHOCOLATE



PINEAPPLE DIP IN
CHOCOLATE



GRAPEFRUIT IN CUP



MANGO IN CUP



PINEAPPLE IN CUP



MELON IN CUP



FRESH FRUIT

Delivering the finest quality from the farms to your table, Antesco provides fresh, natural, and nutrient-rich produce to families around the world. Our premium passion fruits, known for their naturally sweet flavor and high vitamin content, are ideal for fresh consumption and have successfully achieved standard certification. We offer competitive long-term pricing and contract farming solutions for specific volume commitments.



DURIAN



RED DRAGON FRUIT



MANGO



PASSION FRUIT



JACK FRUIT



BANANA



GRAPEFRUIT



LIME

VEGETABLES

At Antesco, we take pride in delivering high-quality fresh vegetables grown in the fertile Mekong Delta region of Vietnam. With strict control from farm to pack, our produce is harvested at peak freshness to preserve natural taste, color, and nutrition. Trusted by global partners, Antesco's fresh vegetables meet international standards for safety, sustainability, and traceability.



SWEET POTATO
(YELLOW, PURPLE)



HOT CHILI



RADICCHIO



ICEBERG



PUREE/NFC & JUICE CONCENTRATES

As one of Vietnam's leading suppliers of frozen and canned fruits and vegetables, Antesco is currently developing a new line of juice concentrates, set to launch in 2026. Made from the finest tropical fruits, our juice concentrates are produced to meet standard specifications and are ready to compete at the top of the market

INSTRUCTIONS FOR USE AND PRESERVATION

- Packing material: PE bag/ aseptic bag in drum
- Storage temperature: Below -18oC
- Shelf life: 24 months from the date of manufacture

PACKAGING DETAIL

1. Carton box 10kg/20kg

- Inner packaging:
- Outer packaging:



2. Mild steel drum 180-200kg

- Inner packaging: PE bag, Aseptic bag
- Outer packaging: Mild steel drum or plastic drum



PASSION FRUIT



CALAMANSI



SOURSOP



RED DRAGON FRUIT



PINEAPPLE



MANGO



BANANA



CANNED PRODUCTS



SWEETCORN KERNEL

- Slices, Chunks, Dices
- Can size: A10, 30 oz, 20 oz, 15 oz



MANGO

- Slices, Chunks, Dices
- Can size: A10, 30 oz, 20 oz, 15 oz



BABY CORN

- Whole, Cut
- Can size: A10, 15 oz



BAMBO SHOOT

- Slices
- Can size: A10, 8 oz,



PINEAPPLE

- Tidbit, Chunks, Dices
- Can size: A10, 30 oz, 20 oz, 15 oz

SUPPLY CHAIN - HUMAN RESOURCES & COMMUNITY CONTRIBUTION

SUPPLY CHAIN

10.000 HA
hectares of cultivation

6.000
farmer households and cooperatives

10 BILION VNĐ
allocated to social welfare
initiatives in the supply chain

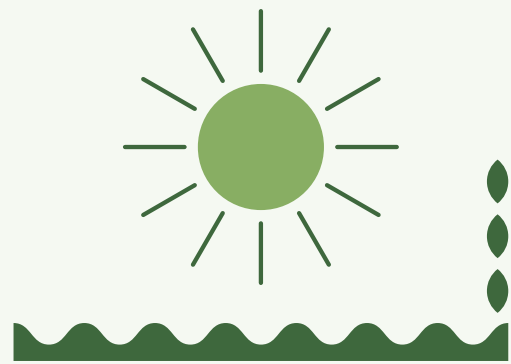


HUMAN RESOURCES & COMMUNITY CONTRIBUTION

1,500+ EMPLOYEES
are currently employed.

20,000+ RURAL LABORERS
both directly and indirectly employed
through the supply chain

SUSTAINABILITY



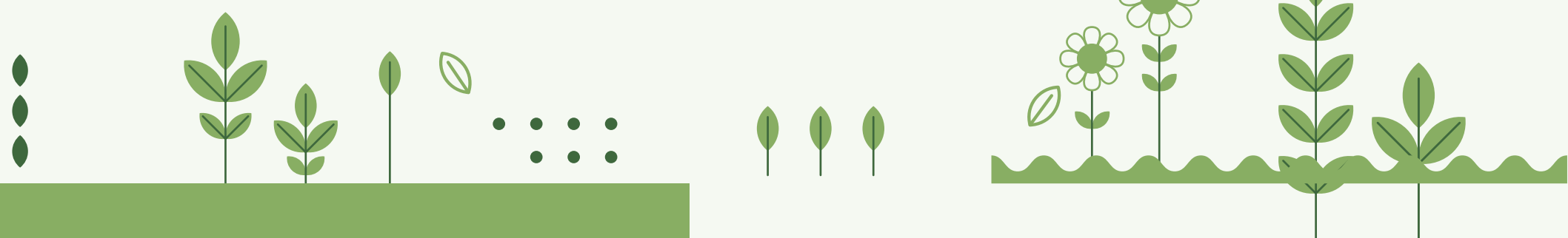
Vietnam pioneer company applying ESG

Green produce and protect environment.

Cooperating and evolving with farmers.

Transparent Governance, Towards Sustainable Development

An Expanding Ecosystem of Products and Services





PRESENT AT WORLDWIDE TRADESHOWS 





Today Tomorrow Together





50 Years of Proven
Market Leadership

ANTESCO AND COMMUNITY

